



YOUR CANVAS

118 Astronaught Ellison S. Onizuka Street
Los Angeles, CA 90012

etcoHOMES 

DTLA LIVING, LITTLE TOKYO STYLE

Information Center Now Open

77 unique urban flats with your choice of custom finishes in the heart of Little Tokyo, DTLA. In the center of it all; shops, restaurants, art galleries and more. Or stay in and enjoy the roof top pool and lounge, gym, fire pit and more. Contact sales to explore Ato's virtual tour and reserve your spot in this unique living opportunity.



EXPLORE YOUR CITY

Living in Downtown Los Angeles. With new craft breweries, old-school ramen joints, legendary mochi confectionaries, pop-up retail shops, and art galleries tucked into every corner, it's obvious why the Little Tokyo/Arts District provides the coolest living in downtown LA. And 118 Astronaut Ellison S. Onizuka Street is the most coveted address around.



Eat + Drink

Blue Bottle Coffee
Azay
Donatsu
Angel City Brewery
Far Bar
Wolf + Crane
Urth Caffè
Salt & Straw



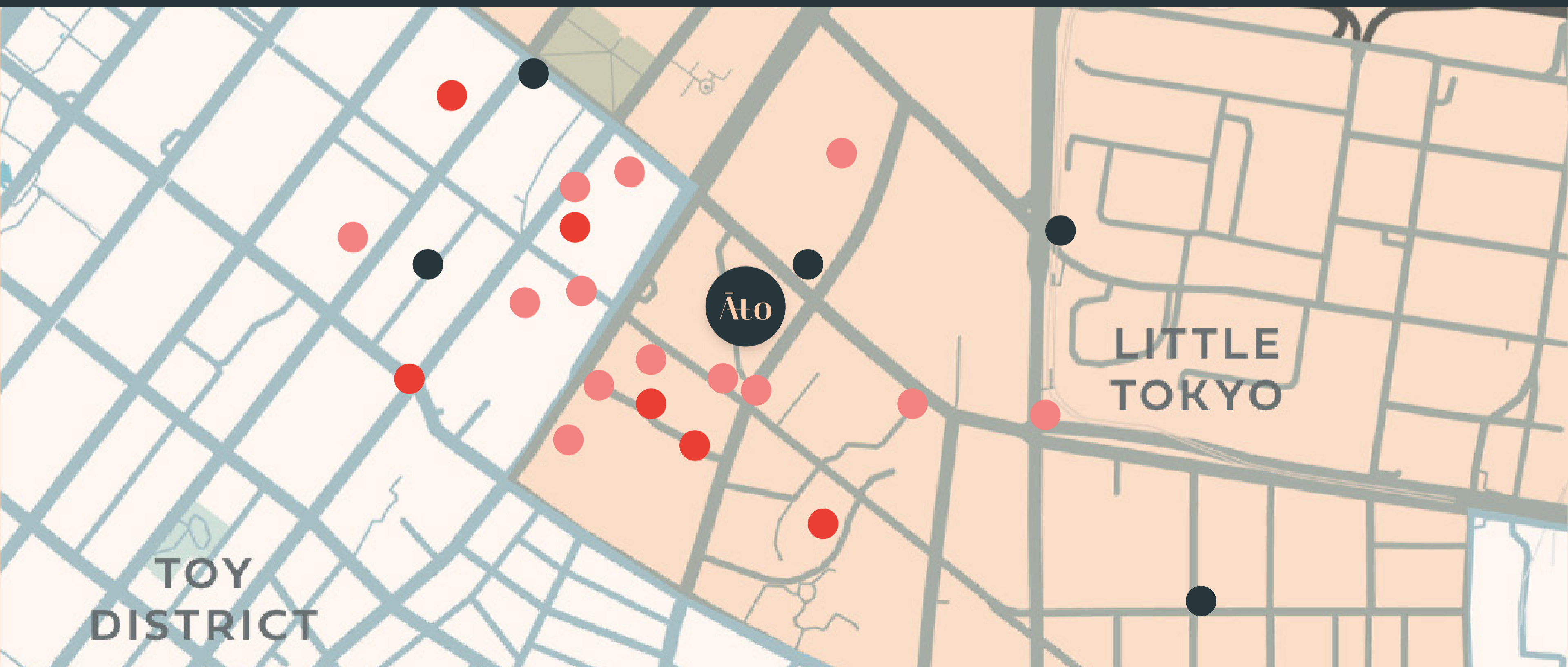
The Arts

The Geffen
A+D Museum
These Days
Art Share L.A.
Hauser & Wirth
Wisdom LA
The Box
Over the Influence



Transportation

Pershing Square
Civic Center
Grand Park
7th st. Metro Center
Union Station



A high-angle, top-down photograph of a person sitting on a bright orange inflatable ring in a pool of water. The water is a deep teal color with visible ripples and reflections. The person's legs are extended outwards, and their feet are visible. The background is a dark, textured surface, possibly a pool deck or a rooftop.

FREE YOUR MIND FIND YOUR HOME DESTINATION LIFESTYLE

Where Life Meets Lifestyle

Why leave home when you have entertainment and sanctuary on your own roof top? Ato offers an outstanding mix of amenities perfect for entertaining friends, elevating personal health, and indulging in an at-home retreat.

UNMATCHED AMENITIES

GROUND LEVEL



FURNISHED
LOBBY



CONCIERGE
SERVICE



RETAIL



LITTLE TOKYO/
ARTS DISTRICT

ROOFTOP



ROOFTOP
LOUNGE



POOL



DOG RUN



OUTDOOR
KITCHEN & BAR



GYM



LOUNGING
CABANAS



BBQ'S AND
ROOFTOP
DINING



SPA EXPERIENCE
SHOWER



YOUR CANVAS

Interiors Outfitted with 3 Unique Design Palettes



COOL



WARM



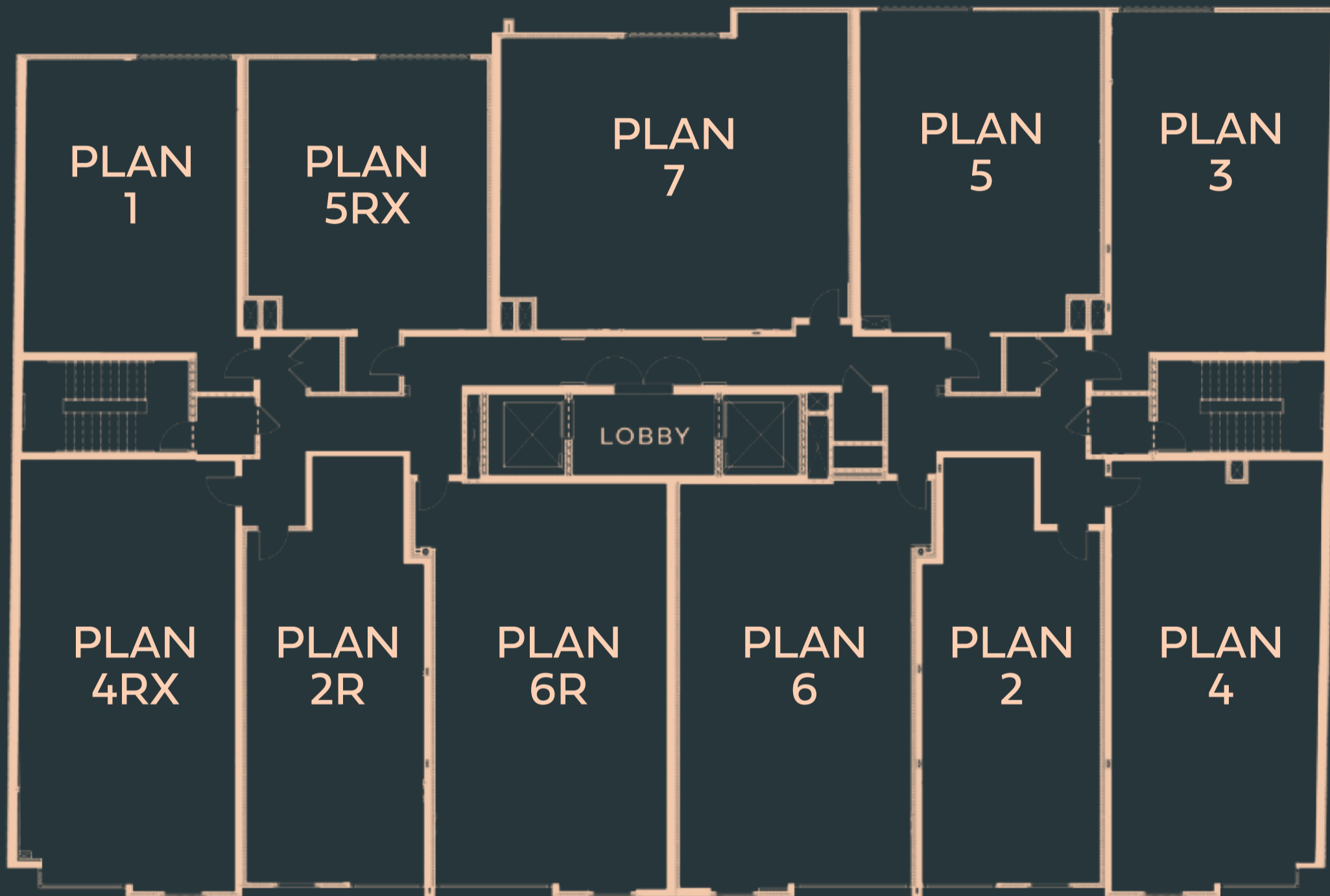
BRIGHT



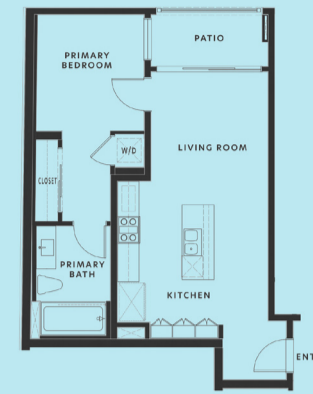
- ▶ Studio, one and two bedroom condominiums
- ▶ Approximately 700 - 1,112 square feet
- ▶ Caesarstone countertops with stainless steel and black finishes
- ▶ Bright white, warm white and cool grey interior color palettes
- ▶ Unmatched residential amenities

FLOOR PLANS

77 Urban Flats
Available on Levels 2-8



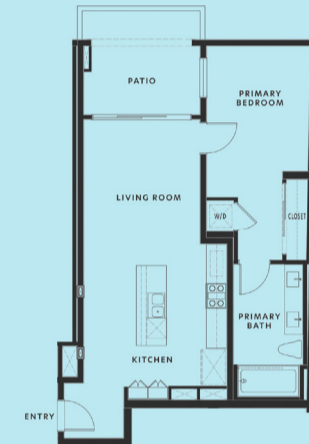
PLAN 1
1 BEDROOM
1 BATH/PATIO
697 SF



PLAN 2/2R
1 STUDIO
1 BATH/PATIO
722/723 SF



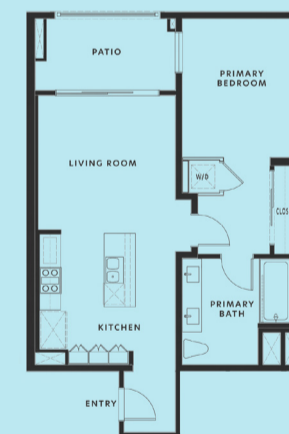
PLAN 3
1 BEDROOM
1 BATH/PATIO
800 SF



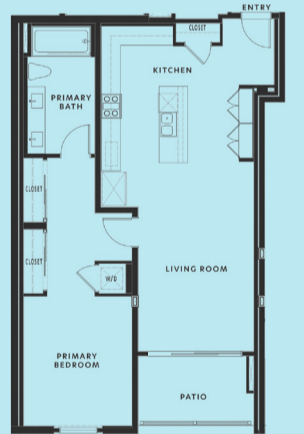
PLAN 4/4RX
1 BEDROOM
1 BATH/PATIO
933/962 SF



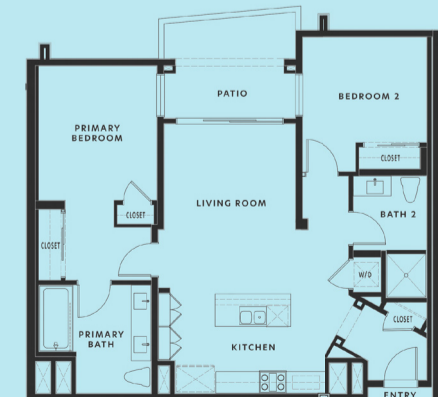
PLAN 5/5RX
1 BEDROOM
1 BATH/PATIO
804/710 SF



PLAN 6
1 BEDROOM
1 BATH/PATIO
1013/1012 SF



PLAN 7
2 BEDROOM
2 BATH/PATIO
1116 SF





Ato

118 Astronaut Ellison S. Onizuka Street
Los Angeles, CA 90012

AtoDtla.com

SALES

AtoDTLA@etcohomes.com

OFF-SITE INFORMATION CENTER

230 East 1st Street
Los Angeles, CA 90012



@AtoDtla

Preliminary. Walls, windows, patios, balconies and roof decks vary per elevation and lot location. All illustrations are artist's concepts, are not to scale and are subject to change in actual production. Square footages are approximate. Builder has the right to change square footage, plans and pricing without notice. © 2023

etcoHOMES 